



DEA No. RA0571996
FL License # CMTL-0003
CLIA No. 10D1094068

Certificate of Analysis

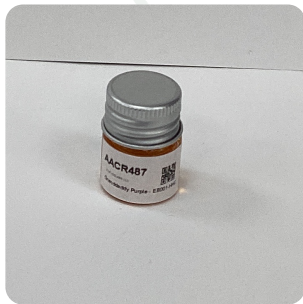
Compliance Test

Pastel Cartel
13326 Immanuel Rd
Pflugerville, Texas 78660

Batch # Granddaddy Purple - EB-001-HHC Test Reg State: Florida
Batch Date: 2022-04-05
Extracted From: Hemp

Order # PUR220407-090001
Order Date: 2022-04-07
Sample # AACR487

Sampling Date: 2022-04-08
Lab Batch Date: 2022-04-08
Completion Date: 2022-04-15
Initial Gross Weight: 11.851 g



Product Image

Potency
Tested

HHC
Tested

Potency 21 (LCUV)
Specimen Weight: 51.420 mg

Tested (LCUV)

Analyte	Dilution (1:n)	LOD (%)	LOQ (%)	Result (mg/g)	(%)
Delta-8 THC	100.000	0.000026	0.0015	33.5800	3.3580
CBN	10.000	0.000014	0.0015	0.4130	0.0413
CBG	10.000	0.000248	0.0015	0.3430	0.0343
Delta-8 THCV	10.000	0.000004	0.0015	0.3360	0.0336
CBGA	10.000	0.000008	0.0015	0.2990	0.0299
THCVA	10.000	0.000047	0.0015	<LOQ	<LOQ
THCA	10.000	0.000032	0.0015	<LOQ	<LOQ
THCV	10.000	0.000007	0.0015	<LOQ	<LOQ
CBC	100.000	0.000018	0.0015	<LOQ	<LOQ
Exo-THC	10.000	0.00023	0.0015	<LOQ	<LOQ
Delta-9 THC-O Acetate	10.000	0.000077	0.0003	<LOQ	<LOQ
CBCA	10.000	0.000107	0.0015	<LOQ	<LOQ
Delta-8 THC-O Acetate	10.000	0.000027	0.0003	<LOQ	<LOQ
CBT	10.000	0.0002	0.0015	<LOQ	<LOQ
CBNA	10.000	0.000095	0.0015	<LOQ	<LOQ
CBL	10.000	0.000035	0.0015	<LOQ	<LOQ
CBDVA	10.000	0.000014	0.0015	<LOQ	<LOQ
CBDV	10.000	0.000065	0.0015	<LOQ	<LOQ
CBDA	10.000	0.000001	0.0015	<LOQ	<LOQ
CBD	10.000	0.000054	0.0015	<LOQ	<LOQ
Delta-9 THC	10.000	0.000013	0.0015	<LOQ	<LOQ

Potency Summary

Total THC None Detected	Total CBD None Detected
Total CBG 0.061%	Total CBN 0.041%
Other Cannabinoids 3.392%	Total Cannabinoids 3.494%

HHC Summary

Analyte	Result (mg/g)	(%)	Total/Unit (mg)
Total HHC	720.07	72.007%	0.00000

Xueli Gao
Ph.D., DABT
Lab Toxicologist

Aixia Sun
D.H.Sc., M.Sc., B.Sc., MT (AAB)
Lab Director/Principal Scientist



Definitions and Abbreviations used in this report: *Total CBD = CBD + (CBD-A * 0.877), *Total CBDV = CBDV + (CBDVA * 0.87), *Total THC = THCA-A * 0.877 + Delta 9 THC, *Total THCV = THCV + (THCVA * 0.87), *CBG Total = (CBGA * 0.877) + CBG, *CBN Total = (CBNA * 0.877) + CBN, *Total CBC = CBC + (CBCA * 0.877), *Total THC-O-Acetate = Delta 8 THC-O-Acetate + Delta 9 THC-O-Acetate, *Other Cannabinoids Total = Total Cannabinoids - All the listed cannabinoids on the summary section, *Total Detected Cannabinoids = Delta6a10a-THC + Delta8-THC + Total CBN + CBT + Delta8-THCV + Total CBG + Total CBD + Total THCV + CBL + Total THC + Total CBC + Total CBDV + Delta10-THC + Total THC-O-Acetate, *Analyte Details above show the Dry Weight Concentrations unless specified as 12% moisture concentration. (mg/ml) = Milligrams per Milliliter, LOQ = Limit of Quantitation, LOD = Limit of Detection, Dilution = Dilution Factor (ppb) = Parts per Billion, (%) = Percent, (cfu/g) = Colony Forming Unit per Gram (cfu/g) = Colony Forming Unit per Gram, , LOD = Limit of Detection, (µg/g) = Microgram per Gram (ppm) = Parts per Million, (ppm) = (µg/g), (aw) = aw (area ratio) = Area Ratio, (mg/Kg) = Milligram per Kilogram, *Measurement of Uncertainty = +/- 10%

This report shall not be reproduced, without written approval, from ACS Laboratory. The results of this report relate only to the material or product analyzed. Test results are confidential unless explicitly waived otherwise. Accredited by a third-party accrediting body as a competent testing laboratory pursuant to ISO/IEC 17025 of the International Organization for Standardization.



DEA No. RA0571996
FL License # CMTL-0003
CLIA No. 10D1094068

Certificate of Analysis

Compliance Test

Pastel Cartel
13326 Immanuel Rd
Pflugerville, Texas 78660

Batch # Granddaddy Purple - EB-001-HHC Test Reg State: Florida
Batch Date: 2022-04-05
Extracted From: Hemp

Order # PUR220407-090001
Order Date: 2022-04-07
Sample # AACR487

Sampling Date: 2022-04-08
Lab Batch Date: 2022-04-08
Completion Date: 2022-04-15

Initial Gross Weight: 11.851 g



HHC

Specimen Weight: 51.420 mg

Dilution Factor: 1.000

Tested
(LCMS)

Analyte	LOQ (%)	Result (mg/g)	(%)	Analyte	LOQ (%)	Result (mg/g)	(%)
(9R)-HHC	7.5E-5	250.0000	25	(±)-9β-hydroxy-HHC	7.5E-5	1.0700	0.107
(9S)-HHC	7.5E-5	469.0000	46.9	Total HHC	7.5E-5	720.0700	72.007

Xueli Gao
Xueli Gao Lab Toxicologist
Ph.D., DABT

Aixia Sun
Aixia Sun Lab Director/Principal Scientist
D.H.Sc., M.Sc., B.Sc., MT (AAB)



Definitions and Abbreviations used in this report: *Total CBD = CBD + (CBD-A * 0.877), *Total CBDV = CBDV + (CBDVA * 0.87), *Total THC = THCA-A * 0.877 + Delta 9 THC, *Total THCV = THCV + (THCVA * 0.87), *CBG Total = (CBGA * 0.877) + CBG, *CBN Total = (CBNA * 0.877) + CBN, *Total CBC = CBC + (CBCA * 0.877), *Total THC-O-Acetate = Delta 8 THC-O-Acetate + Delta 9 THC-O-Acetate, *Other Cannabinoids Total = Total Cannabinoids - All the listed cannabinoids on the summary section, *Total Detected Cannabinoids = Delta6a10a-THC + Delta8-THC + Total CBN + CBT + Delta8-THCV + Total CBG + Total CBD + Total THCV + CBL + Total THC + Total CBC + Total CBDV + Delta10-THC + Total THC-O-Acetate, *Analyte Details above show the Dry Weight Concentrations unless specified as 12% moisture concentration. (mg/ml) = Milligrams per Milliliter, LOQ = Limit of Quantitation, LOD = Limit of Detection, Dilution = Dilution Factor (ppb) = Parts per Billion, (%) = Percent, (cfu/g) = Colony Forming Unit per Gram (cfu/g) = Colony Forming Unit per Gram, LOD = Limit of Detection, (µg/g) = Microgram per Gram (ppm) = Parts per Million, (ppm) = (µg/g), (aw) = aw (area ratio) = Area Ratio, (mg/Kg) = Milligram per Kilogram, *Measurement of Uncertainty = +/- 10%

This report shall not be reproduced, without written approval, from ACS Laboratory. The results of this report relate only to the material or product analyzed. Test results are confidential unless explicitly waived otherwise. Accredited by a third-party accrediting body as a competent testing laboratory pursuant to ISO/IEC 17025 of the International Organization for Standardization.